

FF3709E



Detachable carriage with twist lock and 1-1/8" female attachment

Carriage for pipes. Spring-loaded brake pad holds carriage in position. To release the brake pull down on wire with operating pole.



material main body: steel
part: blue plastic



finish: grey powder coating with orange peel finish RAL 7016



weight: 2,100 kg
4,628 lb



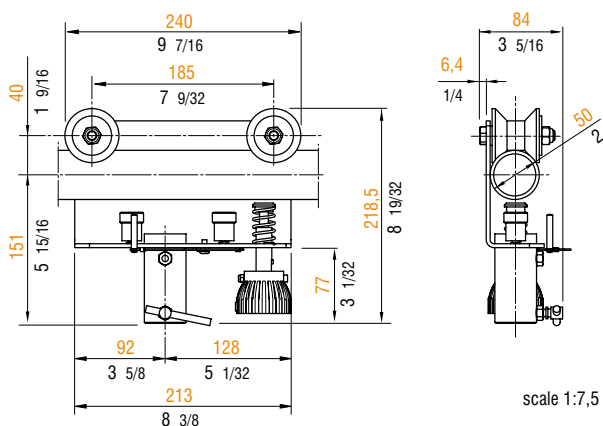
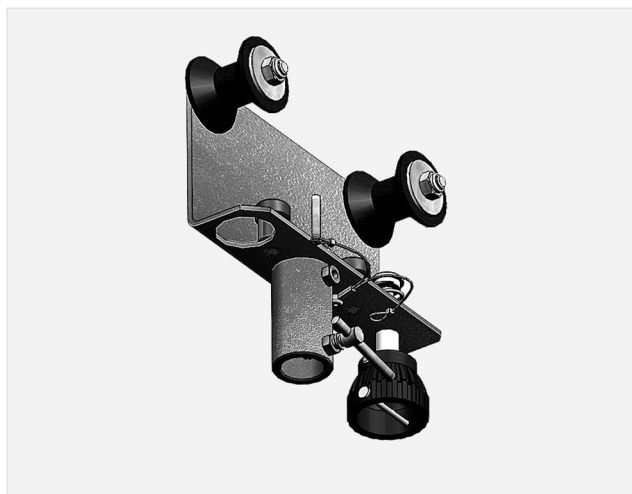
volume: 0,0120 cu m
0,4240 cu ft



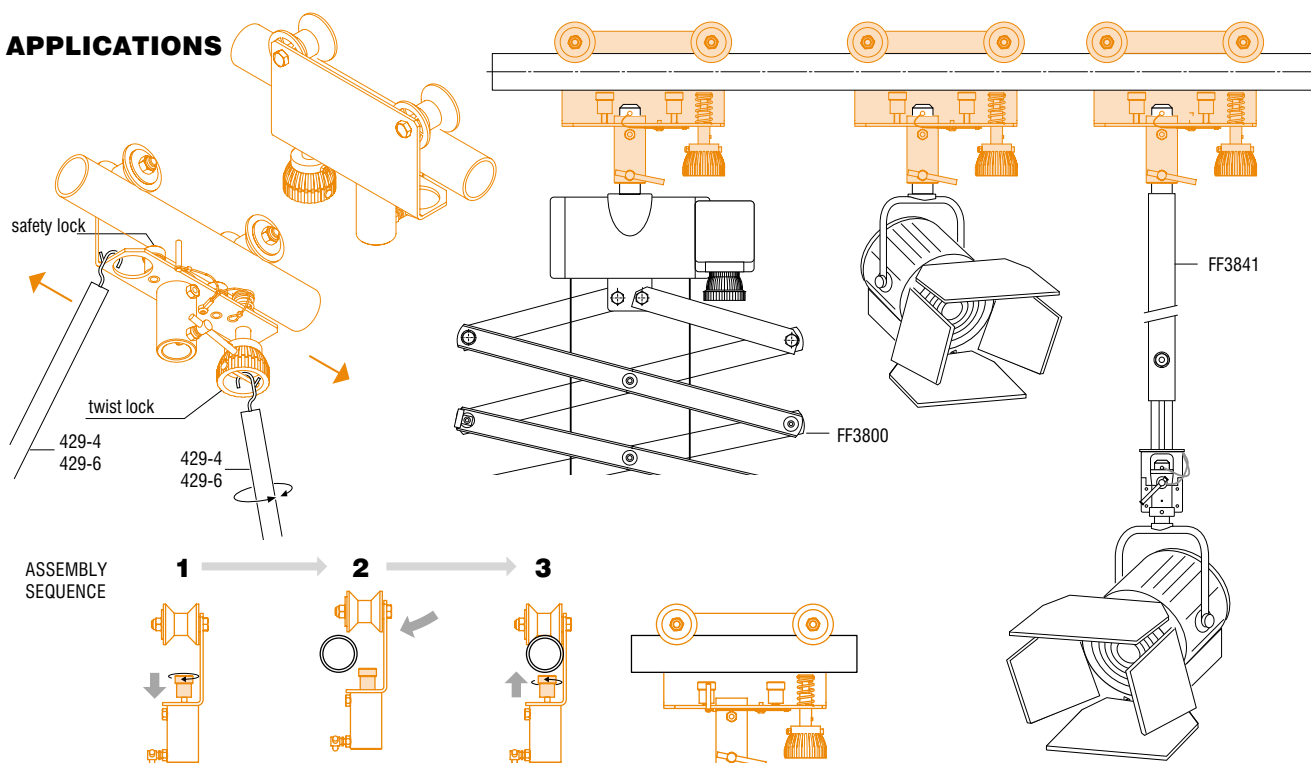
max. load: 90 kg
198 lb



weight: 2,300 kg
5,066 lb



APPLICATIONS



Metric measurements should be taken as reference. Imperial values have been calculated from metric and rounded to nearest 1/32 inch.
IMPORTANT: installation must be carried out by qualified personnel and in accordance with the safety regulations of the country/region of installation.