

**FF3715**



Pipe Carriage for cross pipes

Pipe carriage with twist lock, complete with pipe clamp for pipes from 32 mm to 52 mm (1 1/4" to 2").



material main body: steel  
part: blue plastic



finish: grey powder coating with orange peel finish RAL 7016



weight: 3,032 kg  
6,683 lb



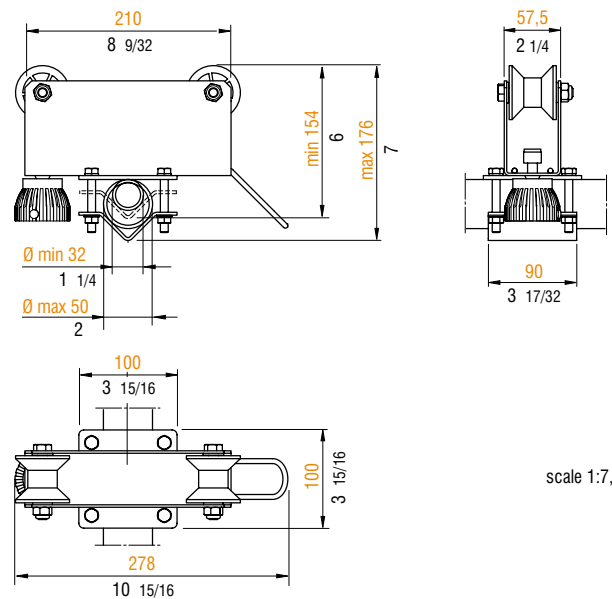
volume: 0,0075 cu m  
0,2650 cu ft



max. load: 200 kg  
441 lb

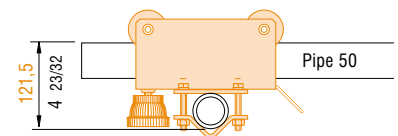
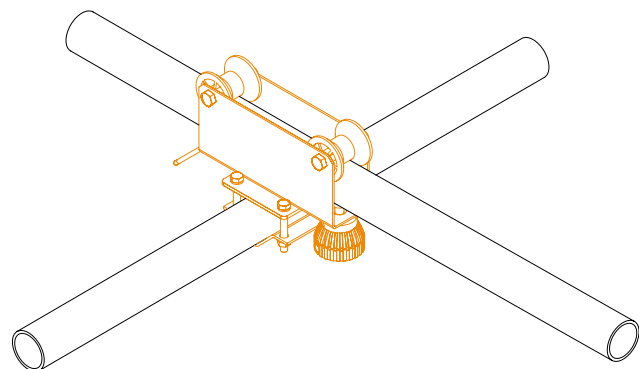
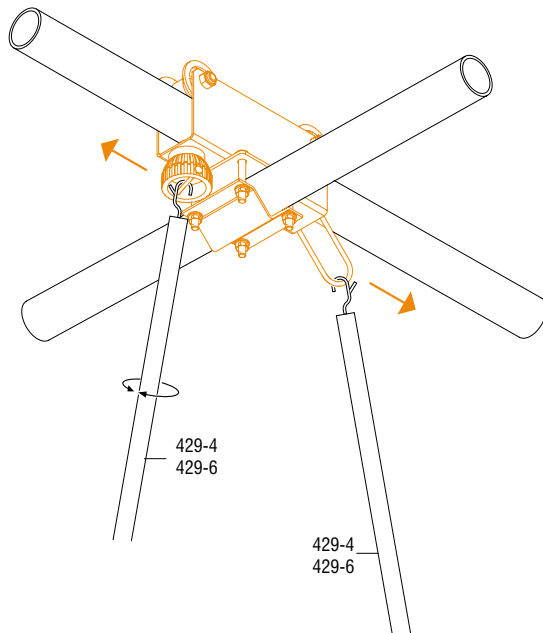


weight: 3,090 kg  
6,812 lb



scale 1:7,5

**APPLICATIONS**



scale 1:10

Metric measurements should be taken as reference. Imperial values have been calculated from metric and rounded to nearest 1/32 inch. **IMPORTANT:** installation must be carried out by qualified personnel and in accordance with the safety regulations of the country/region of installation.