

FF3628



Base plate

The Base Plate can be used to built your own bracket to guarantee a precise fit with the IFF standard brackets.



material: steel



finish: grey powder coating with "orange peel" finish RAL 7016



weight: 0,300 kg
0,661 lb



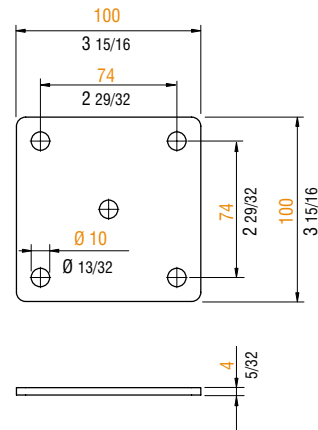
volume: 0,0008 cu m
0,0283 cu ft



max. load: NA

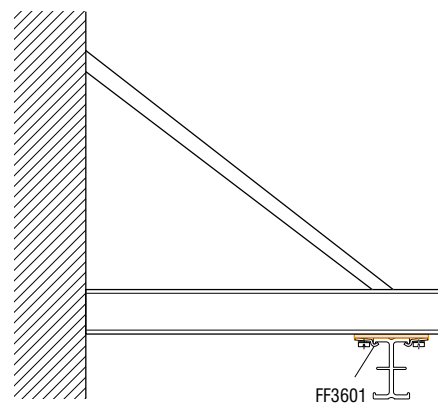
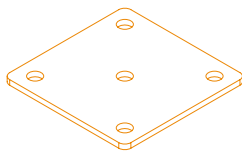


weight: 0,300 kg
0,661 lb



scale 1:4

APPLICATIONS



Flat bracket Art. FF3628 may be used welded to existing hoist, girders, etc. and the rail fixed to it accordingly using a pair of clamps Art. FF3601.