

**FF3231D**

⊥ 60

Heavy-duty carriage with brake and universal head

Spring-loaded brake pad holds carriage in position. To release the brake pull down on wire with operating pole. Universal head with 1-1/8" and 5/8".



material - main body: aluminium & steel



finish: grey powder coating with orange peel finish RAL 7016



weight: 0,910 kg  
2,006 lb



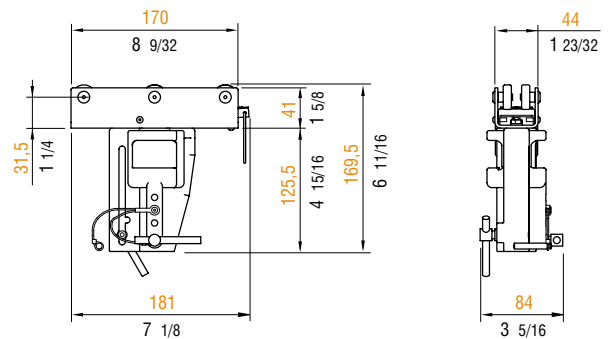
volume: 0,0030 cu m  
0,1060 cu ft



max. load: 70 kg  
154 lb

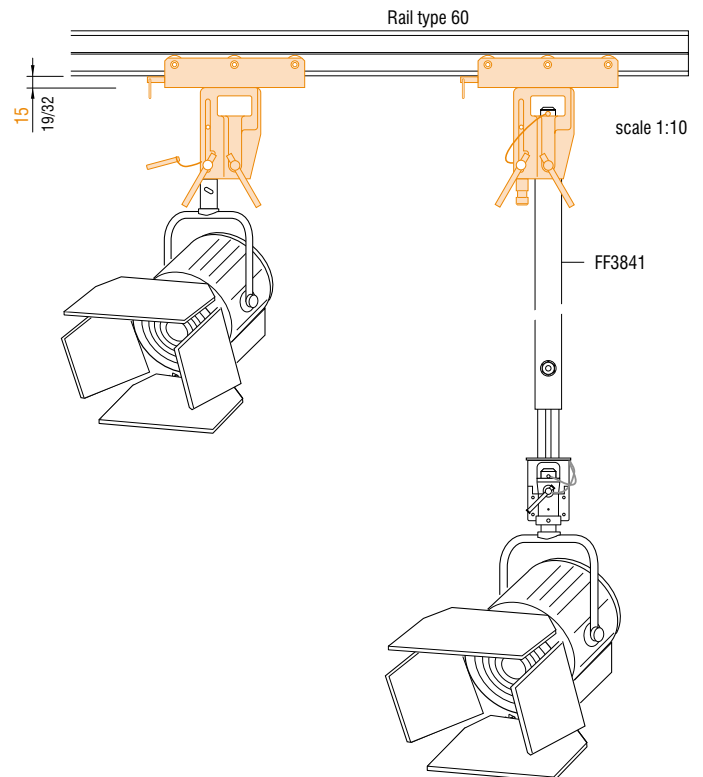
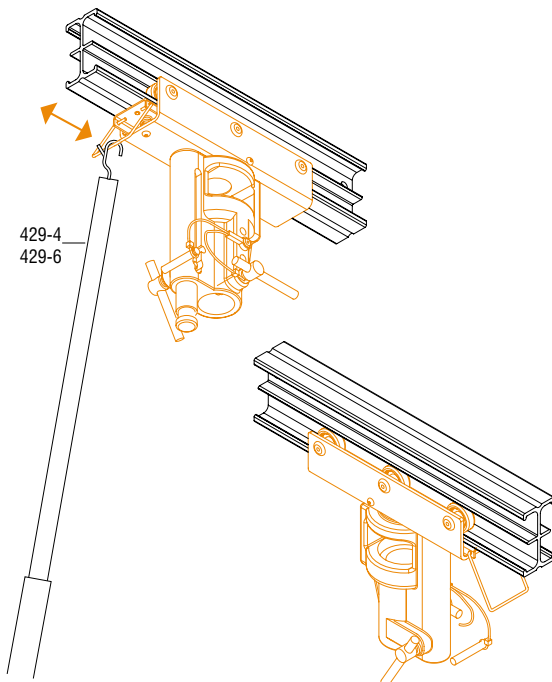


weight: 1,040 kg  
2,291 lb



scale 1:7,5

**APPLICATIONS**



Metric measurements should be taken as reference. Imperial values have been calculated from metric and rounded to nearest 1/32 inch. **IMPORTANT:** installation must be carried out by qualified personnel and in accordance with the safety regulations of the country/region of installation.