

**FF3867**



Spigot mounting point 1 1/8"

Use clamps FF3601 for mounting onto IFF rails or FF3605 for pipes.



material main body: steel



finish: grey powder coating with orange peel finish RAL 7016



weight: 0,62 kg  
1,366 lb



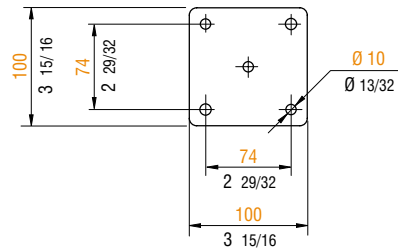
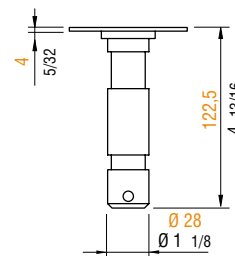
volume: 0,0020 cu m  
0,0706 cu ft



max. load: 80 kg  
176 lb

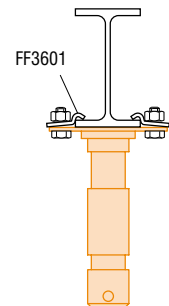
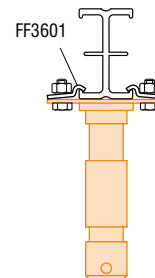
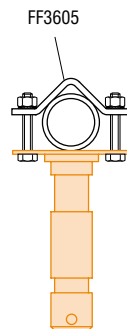
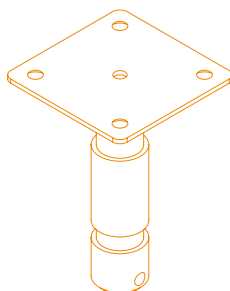


weight: 0,66 kg  
1,455 lb



scale 1:5

**APPLICATIONS**



Metric measurements should be taken as reference. Imperial values have been calculated from metric and rounded to nearest 1/32 inch.   
IMPORTANT: installation must be carried out by qualified personnel and in accordance with the safety regulations of the country/region of installation.