

FF3226V

± 60

Rail 60 cable carriage

Made to support up to 3 electrical cables from 8 to 16mm diameter (3/8" to 5/8") on rail type 60. Cables held by standard cable tie, not supplied



material main body: steel
part: black plastic



finish: grey powder coating with orange peel finish RAL 7016



weight: 0,369 kg
0,813 lb



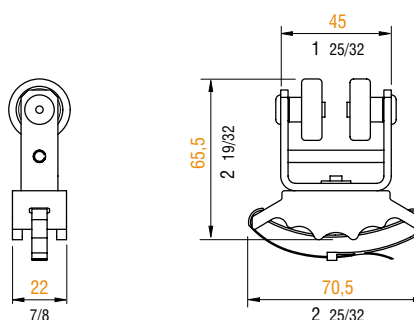
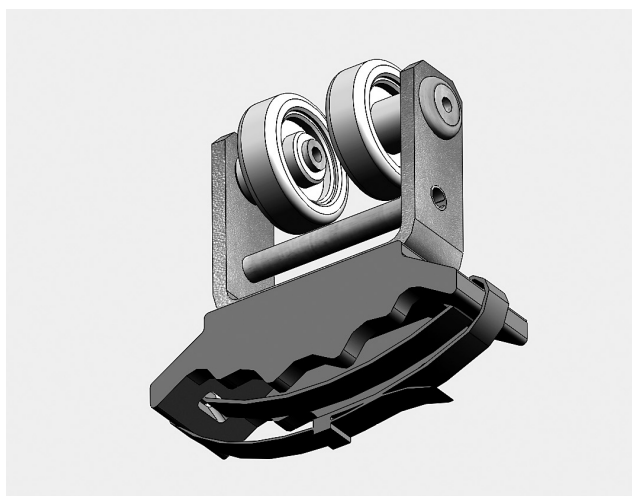
volume: 0,0015 cu m
0,0530 cu ft



max. load: 9 kg
20 lb

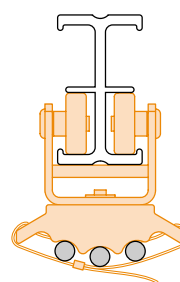
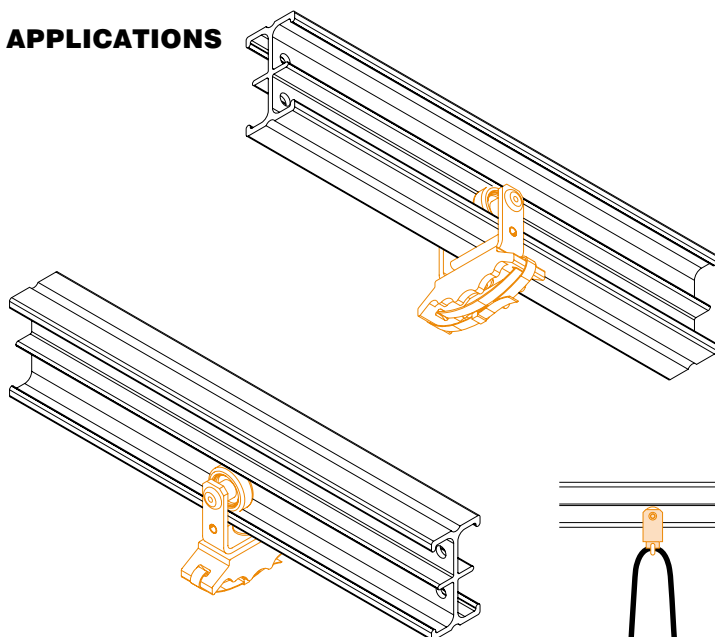


weight: 0,369 kg
0,813 lb

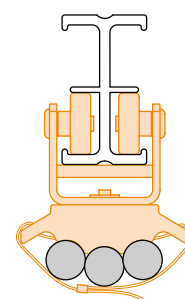


scale 1:3

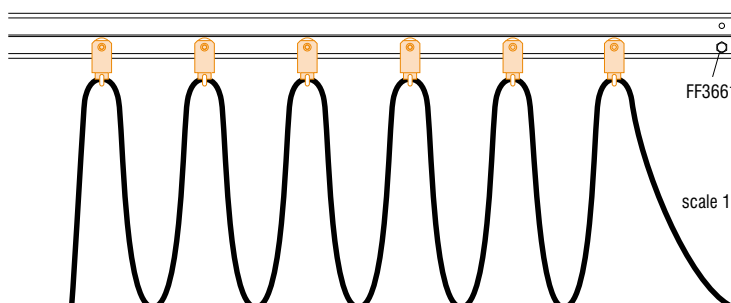
APPLICATIONS



3 cables Ø 8 min (5/16")



3 cables Ø 16 max (5/8")



scale 1:10

Metric measurements should be taken as reference. Imperial values have been calculated from metric and rounded to nearest 1/32 inch.
IMPORTANT: installation must be carried out by qualified personnel and in accordance with the safety regulations of the country/region of installation.